

MODULAR CONSTRUCTION CABINETS

GENERAL CHARACTERISTICS OF OUR MODULAR CONSTRUCTION CABINETS

The Basic material is a thermoplastic compound died in the mass, designed for outdoor use. This material is resistant to external temperatures, rapid temperature changes, shocks, U.V., corrosion, chemical agents and pollution.

The enclosures are manufactured according to SEIFEL's modular construction process (profiles 15mm thick). Made of thermoplastic compound (100% recyclable material), these double skin profiles are mechanically assembled and welded by cold polymerization.

This process gives to the final product the following characteristics:

- Protection degree: IP 44 to IP 55 according to NF 60529
- Shock resistance: IK 10 according to NF EN 62262
- Dielectric strength: 6 KV according to NF EN 60950, transversal resistance of our material
- Fire resistance: UL 94 Vo (auto-extinguishing material) according to NF EN ISO 1210, no propagation of a flame, 2x10 seconds the material extinguishes in a duration inferior to 10 seconds, the material does not let fall a burning drop
- Climatic cycle: method 1 NF C 20-761, wet heat resistance, 6 x 24 hours cycles at extreme temperature +70°C –30°C with 55% of humidity in a climatic precinct, typical temperature +55°C –20°C with 55% of humidity in a climatic precinct
- Aging: NF C 20-540, colour resistance test, duration 6 weeks
- Glow wire test: NFC 20-921 or CEI 60695-2, 960° glow wire applied during 30 seconds, the extinguishing time must be inferior to 30 seconds, the material must not produce any burning drop
- Acid resistance: PVC does not react while exposed to acids
- Corrosion: corrosion free (thermo-plastic)
- Thermal insulation: $K=3,11W/^{\circ}C/m^2$

Cabinet ARM H 845 L 720 P 495 mm

External dimensions : H 845 X W 720 X D 495 mm

Internal dimensions : H 830 X W 690 X D 465 mm

Height of door : 710 mm

Width of door : 630 mm

Closure with padlockable triangular latch locks

With ventilation slots on the door

Floor standing : low belt (open base)

Cabinet ARM H 845 L 1530 P 495mm

External dimensions : H 845 X W 1530 X D 495 mm

Internal dimensions : H 830 X W 1500 X D 465 mm

Height of door : 710 mm

Width of door : 1440 mm

Closure with padlockable triangular latch locks

With ventilation slots on the door

Floor standing : low belt (open base)

Cabinet ARM H 845 L 1980 P 495mm

External dimensions : H 845 X W 1980 X D 495 mm

Internal dimensions : H 830 X W 1950 X D 465 mm

Height of door : 710 mm

Width of door : 1890 mm

Closure with padlockable triangular latch locks

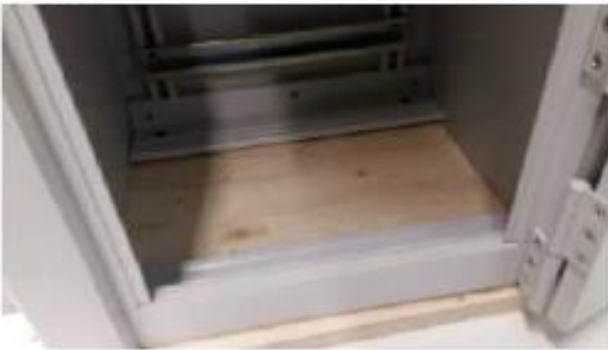
With ventilation slots on the door

Floor standing : low belt (open base)

Example



Detail low belt



Detail lock and hinges

