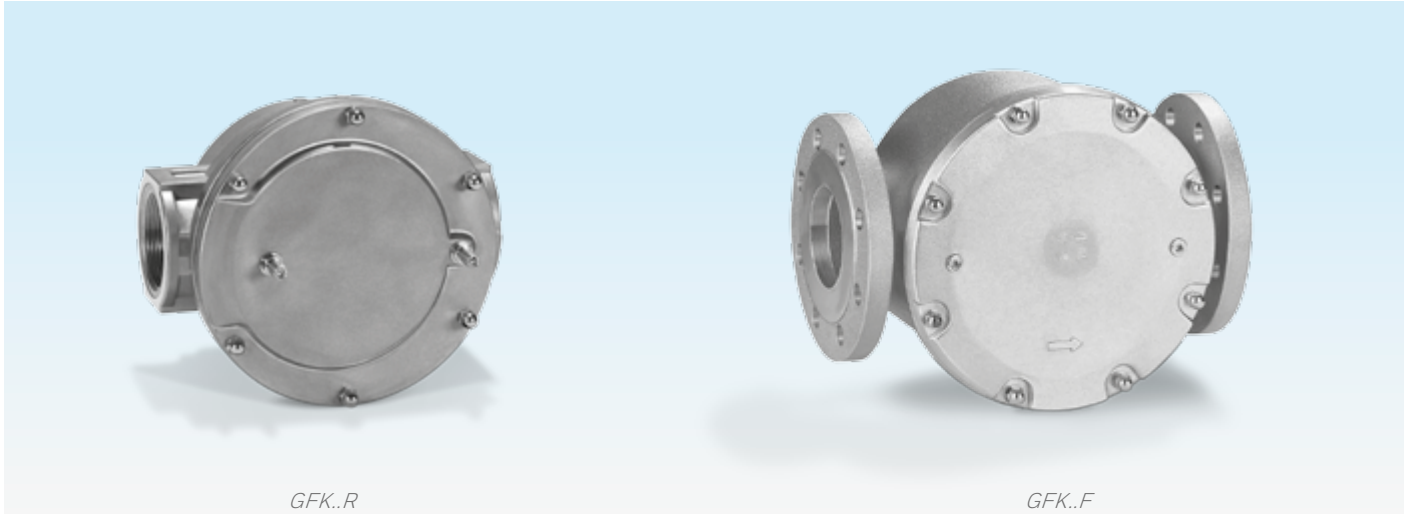


GFK

CE **Gas filters**

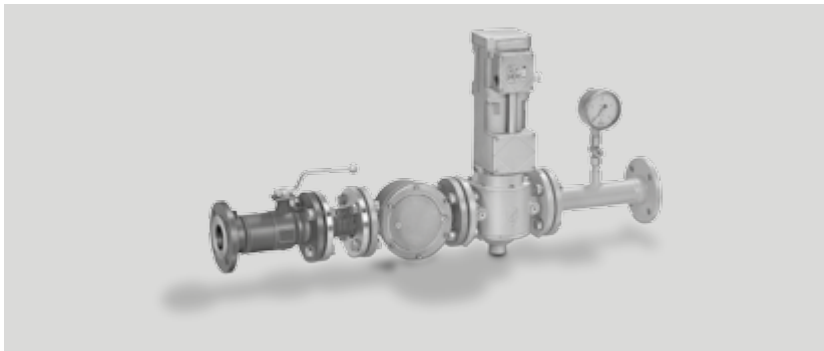
- For the protection of downstream devices against blockage
- Very high throughput
- High purification efficiency
- Long service life
- Easy-to-replace filter pad
- EC type-tested and certified



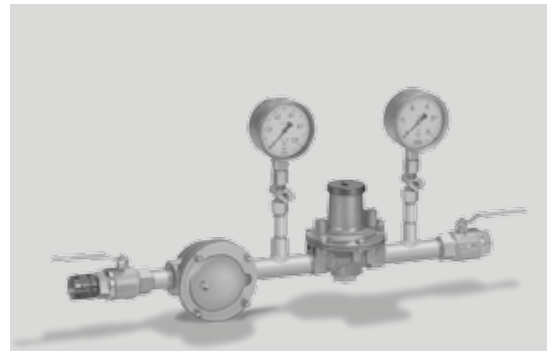
Application

Suitable for filtration of the fuel gas and combustion air supply to all gas consuming appliances.

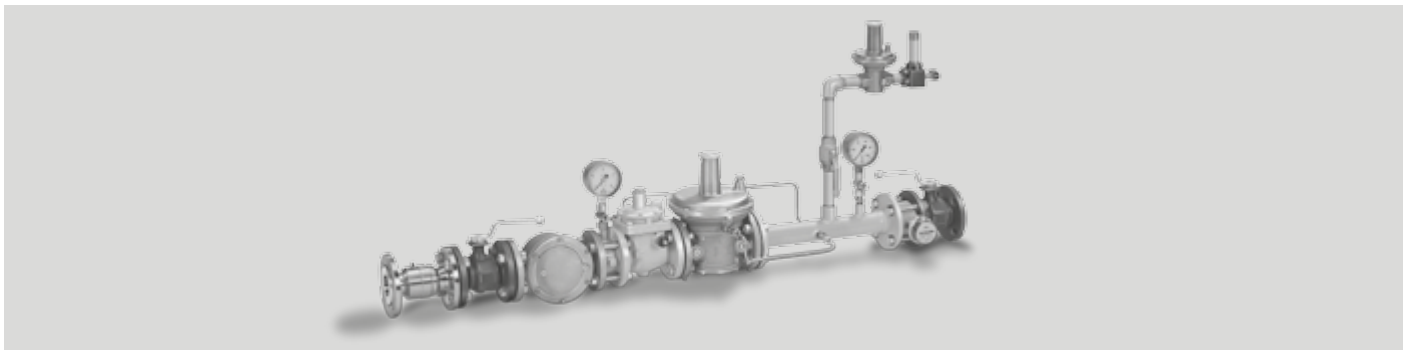
Application examples



Main gas shut-off device with GFK..F



Pressure control system with GFK..R



Gas pressure control system with GFK..F

Selection

Standard-range

	10	40	60	-3	-6
GFK 15R	●	●			●
GFK 20R	●	●			●
GFK 25R	●	●			●
GFK 32R	●	●			●
GFK 40R	●	●			●
GFK 50R	●	●			●
GFK 65R	●	●			●
GFK 40F	●		●		●
GFK 50F	●		●		●
GFK 65F	●		●		●
GFK 80F	●		●		●
GFK 100F	●		●		●
GFK 125F	●	●		●	
GFK 150F	●	●		●	
GFK 200F	●			●	
GFK 250F	●			●	

Order example

GFK 32R10-6

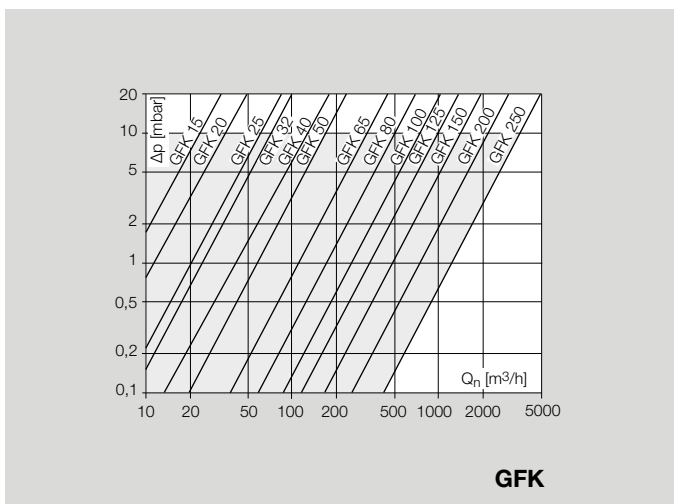
T-Product range

	N	A	40	-3
GFK 15T	●		●	●
GFK 20T	●		●	●
GFK 25T	●		●	●
GFK 40T	●		●	●
GFK 50T	●	●	●	●
GFK 65T	●	●	●	●
GFK 80T		●	●	●
GFK 100T		●	●	●

Order example

GFK 40TN40-3

Flow rate



Technical data

Gas type:
natural gas, town gas, LPG (gaseous),
biologically produced methane and air.

Max. inlet pressure p_U :
1 bar GFK 15 to 250,
4 bar (60 psig) GFK 15R to 65R,
GFK 15TN to 100TN,
6 bar GFK 40F to 100F.

Ambient temperature:
-15 to +80°C (5 to 176°F).

Continuous operation at high temperatures ac-
celerates the ageing of elastomer materials.

Version to DIN 3386

Housing

GFK 15 to 100 made from AlSi.

GFK 125 to 250 made from sheet steel.

GFK..R: Rp internal thread connection to ISO 7-1.

GFK..F:
flanged connection to ISO 7005,
PN 16.

GFK..N: NPT internal thread.

GFK..A: ANSI 150 flanged connection.

Filter pad: polypropylene fleece (standard 50
 μm).

Pressure test points on the cover

GFK 15 to 100:

Inlet side: Rp 1/8 pressure test nipple,
Outlet side: Rp 1/8 pressure test nipple.

GFK 125 to 250:

Inlet side: Rp 1/8 plug,
Outlet side: Rp 1/8 plug.

GFK 15T to 100T:

Inlet side: Rp 1/8 plug,
Outlet side: Rp 1/8 plug.

Maintenance cycles

Change filter pad once per annum, twice per
annum for biologically produced methane, or
in case the pressure differential on the gas fil-
ter has risen by 100% compared to when new,
 $\Delta p_{\text{max}} = 20 \text{ mbar}$.

Contact

www.kromschroeder.com → Process Heat → Sales
Elster GmbH
Strothweg 1 · 49504 Lotte (Büren)
Germany
Tel. +49 541 1214-0
info@kromschroeder.com
www.kromschroeder.com

Technical Information bulletin for this product

www.docuthek.com
Search term: GFK

We reserve the right to make
technical modifications in the
interests of progress.
Copyright © 2016 Elster GmbH
All rights reserved.

Honeywell
**krom
schroder**